

Village Galleries, since 1970 - four West Maui locations. . .

120 DICKENSON STREET • 661.4402 • 800.346.0585

VILLAGE GIFT • FRONT & DICKENSON STREET • 661-5199

CONTEMPORARY • 180 DICKENSON STREET  
661.5559 • 800.483.8599

THE RITZ-CARLTON, KAPALUA  
669.1800 • 800.660.1500

web site: [villagegalleriesmaui.com](http://villagegalleriesmaui.com)

# Village Galleries of Maui

# Vignette

a thumbnail sketch of gallery events

VOLUME 18 NUMBER 2 Lynn Shue, Owner-Director July - December 2004

## JULY - DECEMBER 2004 EXHIBITIONS

JULY 9 - 29, 2004 • MACARIO PASCUAL  
SUMMER SHOW • 120 DICKENSON STREET  
Art Night Reception: Friday, July 9th, 6 - 9 pm



Macario Pascual continues his fascination with the ever-changing atmosphere of West Maui, along with on-going portrayals of plantation workers. His limited palette enhances the subtle contrasts and entrancing light of his panoramic oils. We are privileged to present this Maui master. Please call for photos of available work or view his oils at our galleries at 120 Dickenson Street and the Ritz-Carlton, Kapalua.

CANEWORKER IN MIDDAY LIGHT  
36" X 24" OIL \$7,500

Macario Pascual. . . "A BREAK IN THE CLOUDS captures the clean look of the landscape with its vibrant lush colors one only sees after a heavy rain. The pair of African Tulip trees amidst green vegetation and the play of light in both the foreground and background enhances this composition of Waikapu Valley in central Maui."



MACARIO PASCUAL A BREAK IN THE CLOUDS, WAIKUPU 30" X 40" OIL \$8,500

### Spotlighting... New Works

As a painter, I am affected by the feeling and mood of the scene. This view of the coastline extending to Honolulu Bay, is serene and filled with bits of moving colors in the water. The pineapple fields mold to the land in beautiful shades of jade with unusual beauty. As sunlight glimmers off the rocks and leaves I feel as though our entire island is for me to enjoy."

B. H. Freeland

#### BETTY HAY FREELAND



MOKULEIA BAY 36" X 48" OIL \$12,750

#### KIT GENTRY



ALELELE FALLS 9" X 12" OIL \$5,000

"I find the presence of a figure to be very useful for providing a sense of scale in relation to the natural surroundings - a real benefit in a place like Honomanu Canyon, where the great size of the boulders and waterfalls might not be fully appreciated without something to measure them against."

Kit Gentry

#### ROBERT WAGSTAFF

My tutu gave to me...  
"...one mynah bird in one papaya tree."  
Happy Holiday Greetings (island style) are expressed in this recent work by Robert Wagstaff. His painstaking research reveals the glory of our native birds and their favorite flowers. Robert's numerous awards and acquisition by the State Foundation on Culture and the Arts reflect the respect and esteem Robert and his beautiful paintings have achieved.



...ONE MYNAH BIRD IN ONE PAPAYA TREE  
16" X 12" GOUACHE \$3,400  
(Giclée on canvas available 19.5" x 15" \$195)

AUGUST 6 - 26, 2004 • NATURE'S MAGIC

Art Night Reception: Friday, 6 - 9 pm

Kendahl's bright and bold watercolors clearly reflect her passion for design and pattern. Her intricate drawing hides surprises.



KENDAHL JAN JUBB, *DRAGON*  
40" X 30" WATERCOLOR \$3,100



BEVERLY FOTHERINGHAM *BIRD OF PARADISE*  
20" X 20" WATERCOLOR \$1,900

Our new artist, Beverly Fotheringham, will present large format floral works that glow from within.



ROBBIE LAIRD, *ON THE ROAD TO HANA*  
30" X 22" WATERCOLOR \$1,800

Robbie Laird's delicately handled mixed media watercolors of waterfalls and expanding exotic blossoms will be included in this show.

SEPTEMBER 3 - 23 2004 NEW MAUI ARTISTS  
CALEB O'CONNOR • KIRK KUROKAWA • JOE FLETCHER

Art Night Reception: Friday September 3, 6 - 9 pm

Raised on a farm on Maui, Caleb O'Connor is back home after receiving a BFA from Maryland Institute College of Art and Design and a one year Fulbright Grant to Italy. His work is the buzz of the art community. We are pleased to have Caleb join our roster of fine artists.



CALEB O'CONNOR *EXPANDING BOUNDARIES* 42" X 54" OIL \$10,000.



KIRK KUROKAWA *HOLY GHOST BREADMAKERS* 16" X 20" OIL \$1,950

Kirk Kurokawa, a local boy of Hawaiian, Japanese and Chinese descent, was born and raised on Maui. After a BFA with distinction from the California College of Arts and Crafts in San Francisco and working as an illustrator, he returned home to Maui to pursue his dream of becoming a fine artist. His paintings, focusing on local island life, are a wonderful addition to the Gallery.

After vacationing in Maui many times, for many years, Joe Fletcher and his wife, Kathy, moved to Kula, built the house they had dreamed of, and Joe has painted happily ever after. Joe trudges through cow pastures, old sugar mills, under waterfalls, and into volcanoes, painting all the while. His work is in the collection of the State of Hawaii, as well as many corporate and private collections.



JOE FLETCHER *HALEAKALA IN CLOUD* 20" X 24" OIL \$1,900

Join us in welcoming Caleb, Kirk and Joe at our gala reception September 3rd!

OCTOBER 8 - 28, 2004

**JOYCE CLARK • RECENT WORK**

*Art Night Reception: Friday, Oct. 8th, 6 - 9 pm*

Joyce Clark epitomizes the definition of a fine artist. Joyce puts a lifetime of love for art in each painting. With meticulous care and complete knowledge of her oil medium she creates water that stirs the soul, mountains that touch the sky, and flowers so fragrant they seem to beckon you. Using either brush or palette knife masterfully, Joyce expresses the moods and textures of Maui with such ease that one feels calm and peaceful experiencing one of her beautiful paintings. Having explored Maui's hidden reaches from seaside shores to upcountry trails with pools and waterfalls, Joyce will present a colorful cross-section of Maui's impressive beauty.

*It is a delight to feature new work by Joyce Clark. Be sure to request photos if you are not on Maui during October.*



JOYCE CLARK WEST MAUI RAINBOW, 24" X 36", OIL \$4,800



ED FLOTTE DIVING DOG, 13" X 10", WATERCOLOR \$1,900

NOVEMBER 12 - DECEMBER 9, 2004

**EDDIE FLOTTE**

**ONCE UPON A TIME IN PARADISE**

*Artist's Reception: Friday Nov. 12th, 6 - 9 pm*

Eddie Flotte moved to Maui in 1985 and has been painting the island ever since. From Maui roadsides to the neighborhood backyards and from the people on the street to the coffee houses... Eddie's watercolors skillfully capture the essence of our everyday life with poetic and heartfelt insight.

*We are pleased to present our first show for Eddie. Please join us at our festive opening reception!*

**DECEMBER 10- 31 • HOLIDAY ON MAUI  
120 DICKENSON STREET & VILLAGE GIFT**

*Art Night Reception: Friday, December 10th, 6 - 9 pm*

Alfred Furtado captures vivid memories of the people of the islands of Hawaii. His greatest influences come from his wife, Leilehua and her extended family, the Beamers and Deshas; whose world-renowned dancers and entertainers are pictured in many of his paintings. For those who live here, the paintings bring forth memories of family. For visitors to the islands fortunate enough to have met local people and enjoyed being a part of the culture, the art is a remembrance of a unique experience.

Along with Al's original acrylic paintings and giclée prints, we have a great collection of holiday gift items for you. In December and year-round, our Village Gift & Fine Art shop, located next to the gallery at the Baldwin House, has a constant array of hand-made on Maui crafts and (keeping with Lahaina's history as a port of trade) unique gift items from around the world. Make Village Gift your first stop for your holiday shopping!



AL FURTADO, DOIN' THE HULA!, 24" X 36", ACRYLIC \$5,200

**JULY 9 - 29, 2004**  
**SUMMER FUN • DEYBRA**

*Art Night Reception: Friday, July 9th, 6 - 9 pm*



DEYBRA *BIG FISH* ACRYLIC 30" X 40" \$1,200

Deybra will be joined by Vadra Doser in this exuberant show that presents the whimsy and colorful imagination of these two creative artists.

**AUGUST 13 - SEPTEMBER 2, 2004**  
**THE 'OHANA**

*Art Night Reception: Friday, August 13th, 6 - 9 pm*



DAVO *KANAIO 'OHANA* MIXED MEDIA 48" X 60" \$4,200

This show features recent work by Davo, Reed Cardwell, Claudia Coonen, Jeanne Denton-Nelson and Cindy Conklin dealing with the 'ohana, or family. In this show we will see contemporary perspectives on this timeless theme. Join us for a festive reception with fun and refreshments.

**SEPTEMBER 10 - OCTOBER 1, 2004**  
**ABSTRACT GROUP SHOW**

*Art Night Reception: Friday, September 10th, 6 - 9 pm*



STUART SHARP *GREEN & GOLD* ACRYLIC 60" X 48" \$6,400

This show, featuring work by Stuart Sharp, Fred KenKnight, Giren Lund, Linda Whittemore, and others, will explore the basic components of abstraction; color and form, as well as a refinement of technique.

**OCTOBER 15 - NOVEMBER 4, 2004**  
**WILLIAM SCOBIE-MITCHELL**

*Art Night Reception: Friday, October 15th, 6 - 9 pm*



Lahaina Roads II, Oil, 13" x 13" \$550

From his residence upcountry, Bill has a view that includes ocean and clouds. These elements are reflected in his sublime paintings, in which the boundaries between sea and sky are blurred, creating beautiful abstractions.

NOVEMBER 5 - 25, 2004  
LINDA WHITTEMORE

Art Night Reception: Friday, Nov. 5th, 6 - 9 pm



The magic of the monoprint is again explored in this, our annual show for Linda. Always looking for new techniques, she creates viscosity one-of-a-kind prints of ancient, yet contemporary, themes. Her surfaces and richness of color are a trademark of her beautiful work. You are invited to celebrate with us at our opening for this exceptional artist.

LINDA WHITTEMORE  
HAPPINESS COMES QUIETLY  
MONOTYPE 30" X 17" \$3,100

DECEMBER 10 - 31, 2004  
HOLIDAY SHOW

Art Night Reception: Friday December 10th 6 - 9 pm



PAM ANDELIN PUAKO HAWAII OIL 24" X 30" \$4,000

Pam Andelin's colorful oil paintings will be featured in this, our holiday show. Her brilliant on-location work depicting our dramatic landscape and shorelines will give you joyful enthusiasm to explore and enjoy our beautiful islands.

*There will be something for everyone in our annual Holiday Show. If you are looking for original art or a unique gift for someone special, you will find it here!*

WHAT'S NEW

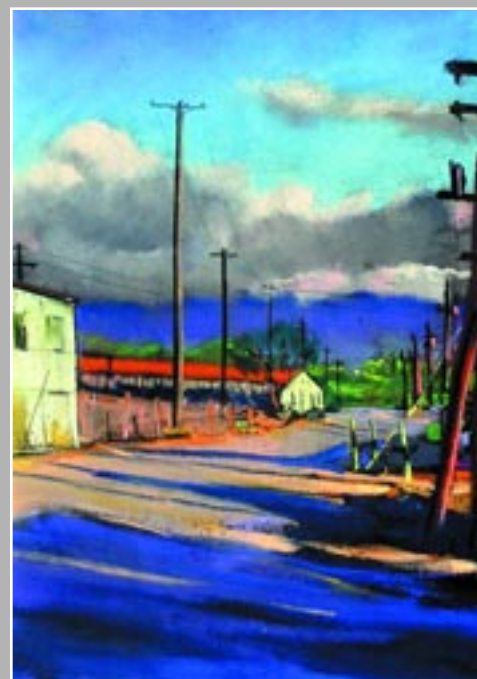
LISA KASPRZYCKI



KIPAHULU SPARKLING BAY OIL 36" X 48" \$4,200

Lisa Kasprzycki's handling of such a difficult subject so impressed me, I need to let everyone have a chance to view it. Lisa is one of Maui's most creative and astounding artists.

STEPHEN BURR



RAKING SHADOWS PASTEL 22" X 15" \$1,200

Stephen Burr's brilliant pastels bring light into any room and dazzle you with their pure color. This piece is especially uplifting and dramatic.

KEN LOYD



Ken Loyd's *Jacaranda Road* expresses the magical beauty and color of Upcountry Maui.

JACARANDA ROAD  
ACRYLIC 30" X 30"  
\$3,400

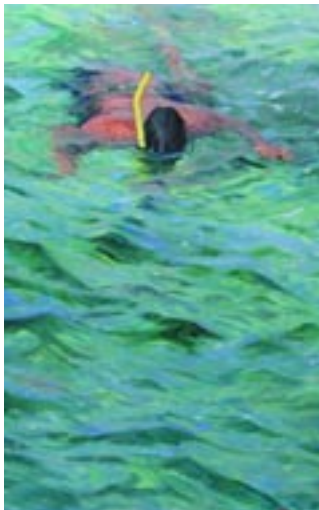
2004 marks our 12th year of our Artist-In-Residence program sponsored by Village Gallery and the Ritz-Carlton. Each month we will present a new body of work by the featured artist. Daily art demonstrations and/or "hands-on" workshops are scheduled for hotel guests providing an opportunity to create your own special Kapalua memories.



BEACH AT THE RITZ OIL  
20" X 20" \$2,250

**JULY 18 - 25**  
**CARLETON**  
**KINKADE**  
**OIL PAINTING**  
Reception: Sunday,  
July 18th, 4 - 6 pm

**AUGUST 21 - 25**  
**MACARIO PASCUAL**  
**MIXED MEDIA**  
**"HANDS-ON"**  
Reception: Sunday,  
August 21st, 4 - 6 pm



YELLOW SNORKEL OIL  
26" X 16" \$3,800

**SEPTEMBER 19 -23**  
**BETTY HAY FREELAND**  
**OIL PAINTING**

Reception Sunday, September 19th, 4 - 6



LOKELANI O MAUI OIL 12" X 18" \$2,200

**OCTOBER 17 - 21**  
**GEORGE ALLAN**  
**OIL PAINTING**  
Reception Sunday  
October 17th, 4 - 6 pm



WAI"OPAI PANIOLO OIL 20" X 30" \$7,500

**NOVEMBER 24 - 28**  
**SHAUNA & CARL**  
**ISLAND JEWELRY**  
**"HANDS-ON"**  
Reception Wednesday  
Nov. 24th, 4 - 6 pm



OPAL BRACELET STERLING SILVER/18K \$750

**DECEMBER 12 - 16**  
**"BUD" BOTTOMS**  
**BRONZE SCULPTURE**  
DESIGN PROCESS "HANDS-ON"  
Reception Sun., Dec. 12th, 4 - 6 pm



TURTLE TRIO  
BRONZE  
SCULPTURE  
H: 9.5"  
\$2850



800.660.1500 • 669.1800

villagegalleriesmaui.com

January of 2004 marked our tenth anniversary at the beautiful Ritz-Carlton, Kapalua. Our association with this resort began several years before the hotel opened. We worked closely with the designers and arranged site-specific major commissions for gallery artists George Allan, Joyce Clark, Betty Hay Freeland and Fred KenKnight. It's a constant delight to hear guests comment on their enjoyment of the our island art throughout the hotel.

**THE LIBRARY • CARLETON KINKADE • "BUD" BOTTOMS**



ABOVE: "BUD" BOTTOMS  
BRONZE, TURTLE GIRL  
\$26,000

CARLETON KINKADE  
LEFT: CHARTER-LAHAINA  
OIL 30" X 40" \$5,200  
ABOVE LEFT: REFLECTIONS  
ON A SUMMER MORNING,  
40" X 50", \$6,800

**JOYCE CLARK • THE LOBBY**



SHORES OF MAUI OIL, 18" X 24", \$3,800

*Guest Artists*  
We often have artists in all our galleries for demonstrations and signing of new releases. Please call the gallery when you are on island for an updated schedule.



KAY SATTLER JOURNEY TO THE SUN  
HAND-COILED CLAY/23K \$4500

**THE VILLAGE GALLERIES**

At The Ritz-Carlton, Kapalua

**BETTY HAY FREELAND • LOBBY BAR**



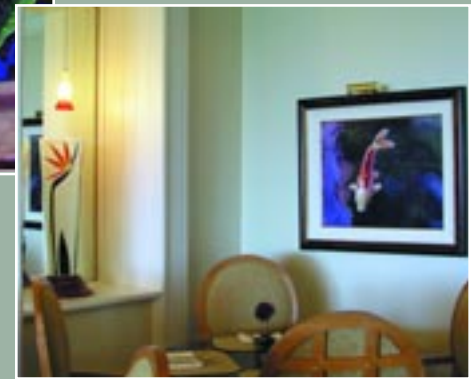
HONOLUA TO KAPALUA OIL 28" X 44" \$10,500 Giclée Available

**TRACY DUDLEY & PIZZO GLASS • THE TERRACE**



On your next visit to Village Galleries, at The Ritz-Carlton, Kapalua, you will be able to view and purchase art displayed in the Lobby Bar, Library, Terrace Restaurant, Anuenue Room, walkways next to the gallery and the Club Room. Come to the gallery, located off the lobby, for information on current exhibitions when you arrive. Mahalo nui loa to the Ritz-Carlton for its continued support of our fine island artists!

ABOVE: TRACY DUDLEY  
GUAVA HIBISCUS ACRYLIC  
30" X 15" \$1,800  
RIGHT: RAY & DIANE PIZZO  
BIRD OF PARADISE VASE  
FUSED GLASS H: 27" \$1,950  
FAR RIGHT: T. DUDLEY  
KAPALUA KOI II ACRYLIC  
24" X 30" \$2,950



**FRED KENKNIGHT • ĀNUENUE ROOM**



ISLAND DAWN WATERCOLOR 22" X 41" \$3,100

New Releases!

**GALLERY SHOPPER 800.346.0585**

web site: [villagegalleriesmaui.com](http://villagegalleriesmaui.com)

**BETTY HAY FREELAND**



*Ka'anapali Beach, Maui*  
Giclée on canvas S/N  
3 sizes: Framed in Koa & Linen

8" x 13"  
\$350

20" x 32"  
\$1200

26" x 42"  
\$1900

(Also available unframed)

**GEORGE ALLAN**

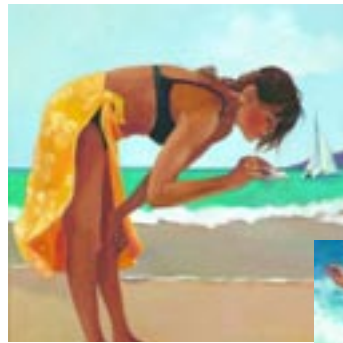


*Kula Agapanthus*  
Giclée on canvas S/N  
16" x 24" \$850  
framed in Koa & Linen  
(also available unframed)

**CARLETON KINKADE**



*Basket Weaver & Lei Maker* Giclée on canvas  
Diptych: 18" x 28" (two 18" x 14" images) \$595 for the set of two unframed



**SUZANNE DE CILLIA**



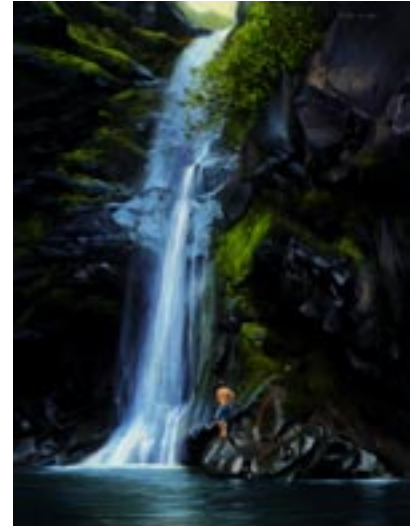
3 new Giclée prints on canvas S/N  
Above: *Yellow Pareu* 14" x 14"  
Above Right: *Winter Waves* 9" x 16"  
Right: *Beach Girls* 14" x 16"  
\$150 each unframed

**MICHAEL KRAHN**



Giclée on watercolor paper S/N  
*Haleakala From 14 MM*  
11.25" x 17.5"  
\$150 unframed

**KIT GENTRY**



All prints available framed or unframed plus shipping costs. Please call to order 800.346.0585 or 800.660.1500 or visit us at [villagegalleriesmaui.com](http://villagegalleriesmaui.com)

Giclée on canvas S/N  
*Alelele Falls*  
12" x 9"  
\$450 framed

**THE VILLAGE GALLERIES**  
120 Dickenson Street  
Lahaina, Maui, Hawaii 96761



HONOAPIILANI HWY 30 10 MILES TO KAPALUA